



## ICY BOX IB-2912MCL-C31

### USB Type-C® CloneStation for M.2 NVMe SSD

#### Key features

- External aluminium enclosure for M.2 NVMe SSDs
- For two M.2 NVMe SSDs, 22x 30/42/60/80 mm
- M-Key socket for M-Key or B+M-Key NVMe SSDs
- Interface to host computer: USB 3.1 (Gen 2) Type-C® with up to 10 Gbit/s
- Bootable SSD cloning even without PC (stand-alone)
- Creates an identical copy of your SSD without the use of a computer
- SINGLE function: shows both disks as individual volumes
- 45 mm fan for active cooling
- Toolless assembly of both SSDs



#### Packing content

1x IB-2912MCL-C31, 1x wall power supply, 1x USB Type-C® to Type-C® cable, 2x silicone thermal pad, 2x aluminium heat sink, 4x rubber band for heat sink, 1x manual

## Even more!

True grandeur is revealed on the inside of things! You can install two M.2 NVMe SSDs in our external enclosure and use the ensemble either as huge external data storage or as a CloneStation. The IB-2912MCL-C31 thus combines two much desired performers in one.

#### Technical data

<b>Model</b>	IB-2912MCL-C31
<b>Article no.</b>	60726
<b>EAN code</b>	4250078170624
<b>Brand</b>	ICY BOX
<b>Colour</b>	Black
<b>Material</b>	Aluminium, plastic
<b>Interface to host computer</b>	USB 3.1 (Gen 2)
<b>Transfer rate</b>	Up to 10 Gbit/s
<b>UASP support</b>	Yes
<b>Length of data cable</b>	45 cm
<b>ON/OFF button</b>	Yes
<b>Socket</b>	M-key
<b>M.2 card size</b>	22x 30/42/60/80 mm
<b>M.2 interface</b>	SATA I,II,III (6 Gbit/s)
<b>Internal interface</b>	PCIe 3.0 (NVMe)

#### Supported M.2 card keys

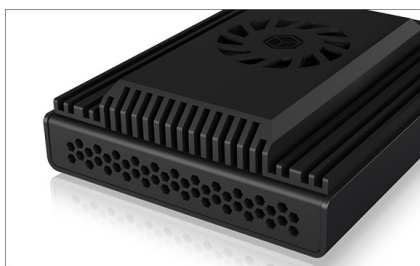
<b>SSD capacity</b>	Unlimited
<b>Clone function</b>	Yes
<b>HotSwap</b>	Yes
<b>Plug &amp; Play</b>	Yes
<b>Cooling</b>	45x45 mm fan
<b>A-weighted sound pressure level</b>	47 dB(A), at 20 cm distance
<b>LED</b>	Power, access and clone function
<b>Power supply</b>	Wall power supply, Level VI, 20 W (5 V/4 A)
<b>Operating system</b>	Windows®, macOS®
<b>System requirements</b>	1x available USB 3.1 (Gen 2) Type-C® host interface, or: 1x available Thunderbolt™ 3 Type-C® host interface, one free household 230 V power source

#### M.2 SATA B-Key/ B+M-Key

<b>SSD capacity</b>	Unlimited
<b>Clone function</b>	Yes
<b>HotSwap</b>	Yes
<b>Plug &amp; Play</b>	Yes
<b>Cooling</b>	45x45 mm fan
<b>A-weighted sound pressure level</b>	47 dB(A), at 20 cm distance
<b>LED</b>	Power, access and clone function
<b>Power supply</b>	Wall power supply, Level VI, 20 W (5 V/4 A)
<b>Operating system</b>	Windows®, macOS®
<b>System requirements</b>	1x available USB 3.1 (Gen 2) Type-C® host interface, or: 1x available Thunderbolt™ 3 Type-C® host interface, one free household 230 V power source



## ICY BOX **IB-2912MCL-C31** USB Type-C® CloneStation for M.2 NVMe SSD



### Well cooled to work

The design is simple and focused entirely on functionality. Yet it is by no means unattractive! The air intake, additional heat sinks and materials have been selected with optimal heat dissipation in mind, and an active fan is also integrated. Because anyone who works professionally with high-performance M.2 NVMe's knows how important sufficient cooling is to avoid performance losses.



### Installation made easy

Installing or changing the two M.2 cards is quick: simply put on the SSD holder and click it into the IB-2912MCL-C31, click-and-go so to speak. Tedious screwing with tools and the use of spacers are now a thing of the past.



### State-of-the art cloning

Of course, this CloneStation also supports the bit-by-bit cloning process, which means that bootable SSDs can be duplicated without any problems. The CloneStation does not even have to be connected to a computer.

#### Logistical data

**Packing unit:** 40 pcs./carton  
**Total weight:** 18.76 kg/carton  
**Gross weight (with packing):** 0.449 kg  
**Net weight:** 0.188 kg

**Dimension/carton:** 300x530x360 mm  
**Dimension (with packing):** 50x166x127 mm  
**Dimension of article:** 121x87x27 mm  
**Country of origin:** China