



## ICY BOX IB-2242U2K

### 4x 2.5" U.2 SSD Backplane

#### Key features

- Host connector: 4x U.2 / Mini SAS HD (SFF-8643)
- Supports U.2 (SFF-8639) SSD, up to 32 Gbit/s
- Full aluminium and steel backplane for 5.25" bay
- Individually lockable carriers to secure the SSDs
- LED indicator for power and access
- Two 40x40x10 mm cooling fans
- Supports Windows®



#### Packing content

1x IB-2242U2K, 8x frame screw, 16x HDD tray screw, 2x key,  
1x manual \*cables not included!

## Fast, faster, U.2 NVMe

This backplane provides space for 4x 2.5" U.2 or even SATA/ SAS SSDs. The system works reliably and quiet and cools the SSDs thanks to two 40x40 mm fans, which are adjustable in two levels. The high-quality manufacturing rounds off the package.

#### Technical data

<b>Model</b>	IB-2242U2K
<b>Article no.</b>	60799
<b>EAN code</b>	4250078171355
<b>Brand</b>	ICY BOX
<b>Colour</b>	Black
<b>Material</b>	Aluminium and Metal
<b>Interface to host computer</b>	4x Mini SAS HD (SFF-8643)
<b>SSD size</b>	2.5"
<b>SSD height</b>	Up to 15 mm
<b>SSD interface</b>	U.2 (SFF-8639)
<b>SSD capacity</b>	Unlimited
<b>Interface standard</b>	PCIe 3.0 x4
<b>Transfer rate</b>	Up to 32 Gbit/s
<b>Space required</b>	1x 5.25" bay
<b>HotSwap</b>	Yes

#### Cooling

#### Fan control

#### Lock

#### LED

#### Power supply

#### Operating system

#### System requirements

Two 40x40 mm fans

2 levels

Yes

Power and access

SATA 15 Pin

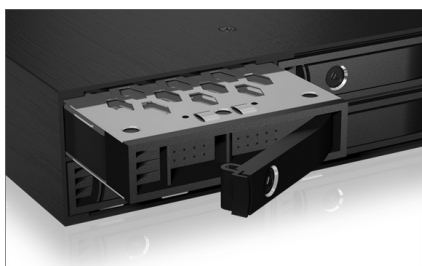
Windows®

4x free U.2 port (SFF-8643) on your host computer,  
4x U.2 cable (SFF-8643 to SFF-8643). Other U.2

ports on the motherboard with PCIe 3.0 x4 support, e.g. Slimline SAS (SFF-8654), Oculink (SFF-8611), can be used with the appropriate cables or adapters. If a PCIe expansion card with 4x Mini SAS HD (SFF-8643) port is used, the motherboard must support PCIe x4x4x4 mode! The host on the motherboard must support the HotPlug function in order to support the HotSwap function of the U.2 SSD!



## ICY BOX **IB-2242U2K** 4x 2.5" U.2 SSD Backplane



### The sprinter in the storage segment

U.2 is finding its way more and more into professional storage solutions. No surprise, U.2 delivers PCIe (NVMe) data transfer rates of up to 32 Gbit/s into the 2.5" format and supports HotSwap. The IB-2242U2K supports 2.5" SSDs with a height of up to 15 mm.



### Cooling in two levels

The IB-2242U2K contains two 40 mm fans for optimal cooling. The fans are adjustable in two levels with a switch on the back side and offer the right mode for every application.



### Under lock and key

Data security is very important for ICY BOX. Each of the four carriers can be locked separately thanks to the integrated locks and thus protect your SSDs against unauthorized access.

#### Logistical data

**Packing unit:** 8 pcs. / carton  
**Total weight:** 8 kg  
**Gross weight:** (with packing): 0.889 kg  
**Net weight:** 0.708 kg

**Dimension/Carton:** 440x335x215 mm  
**Dimension (with packing):** 214x195x80 mm  
**Dimension of article:** 145x150x41 mm  
**Country of Origin:** China